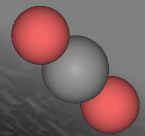
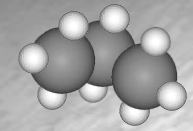
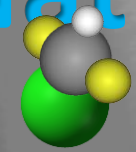


Training on Naturals



...Naturally TAFE



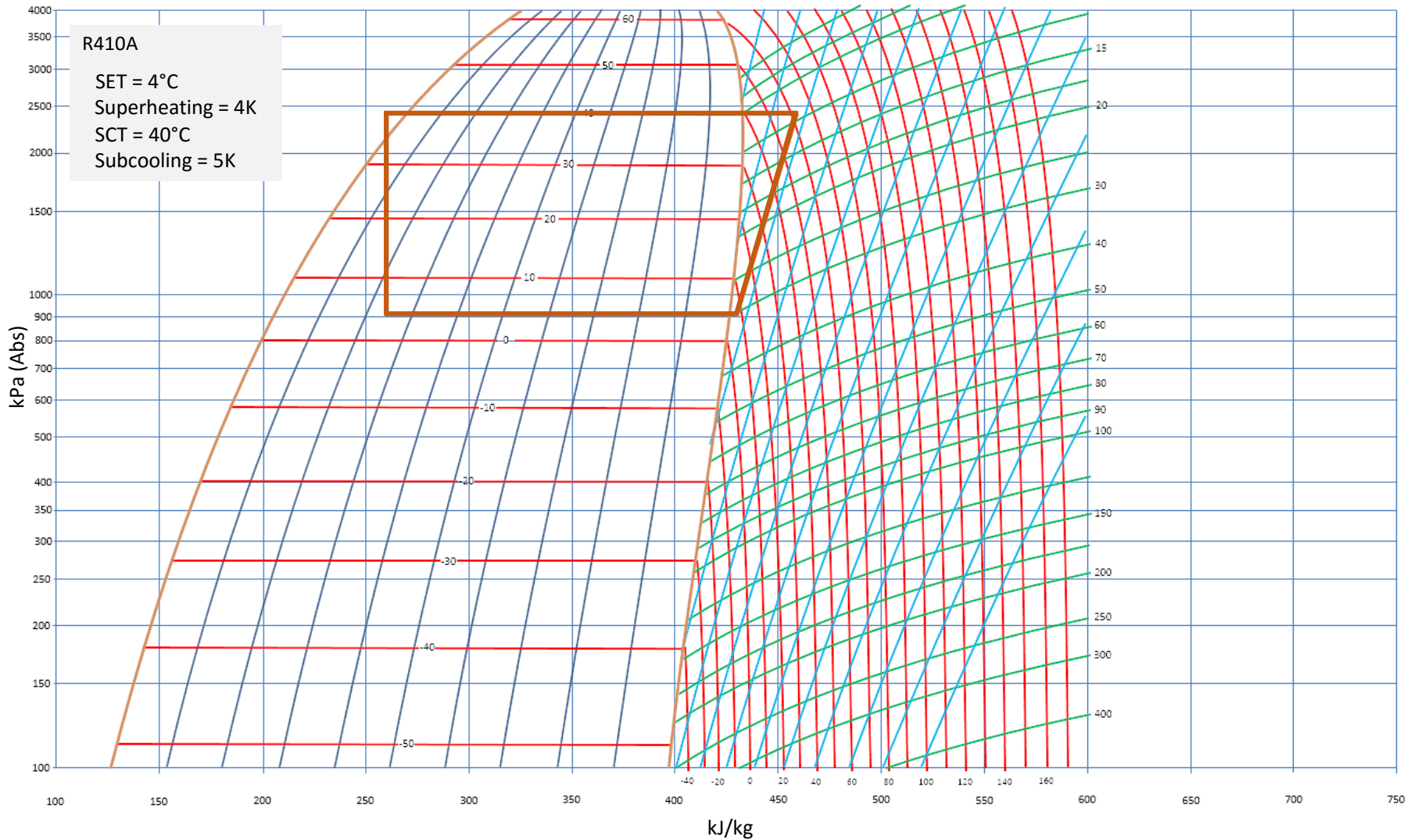
R410A

SET = 4°C

Superheating = 4K

SCT = 40°C

Subcooling = 5K



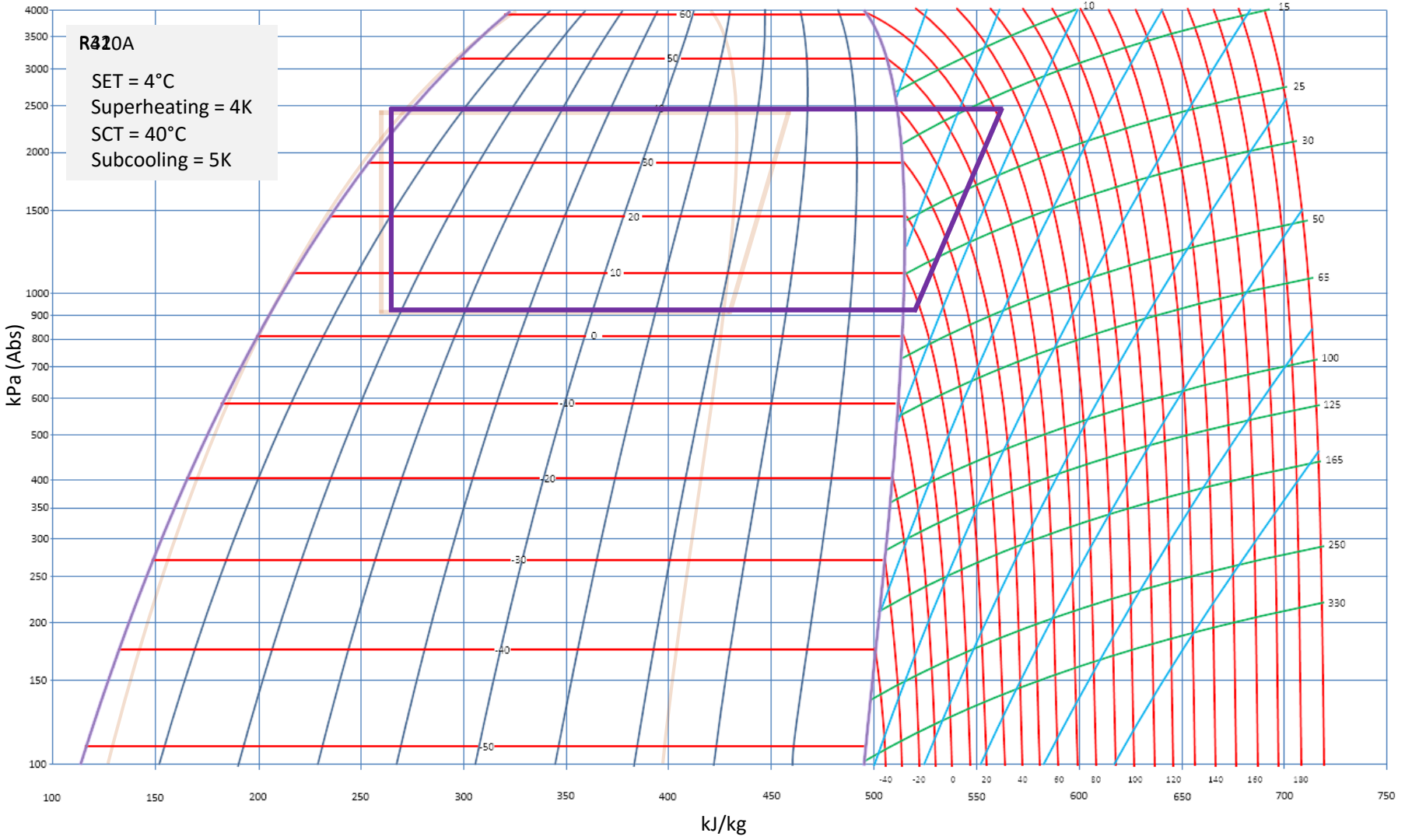
R320A

SET = 4°C

Superheating = 4K

SCT = 40°C

Subcooling = 5K



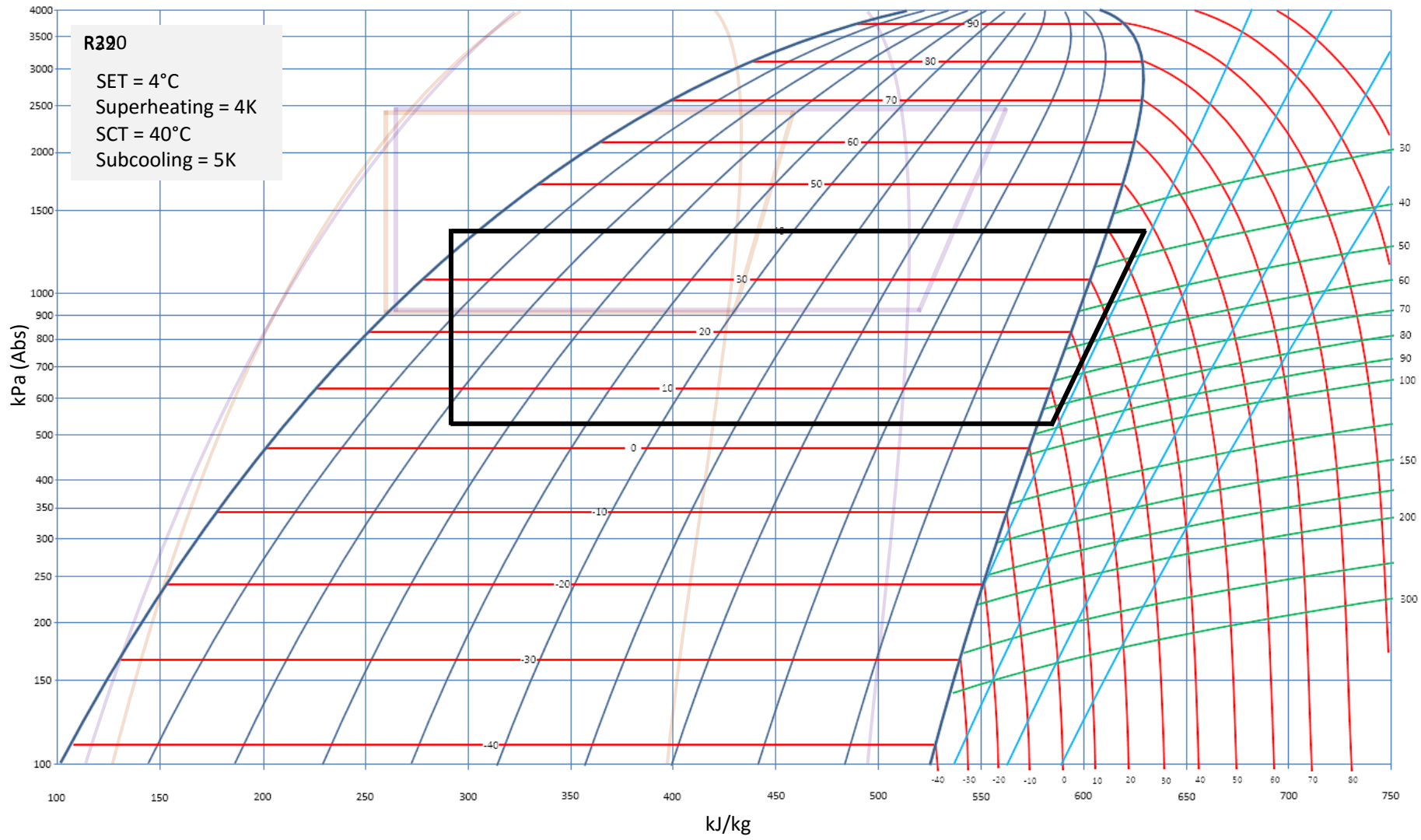
R220

SET = 4°C

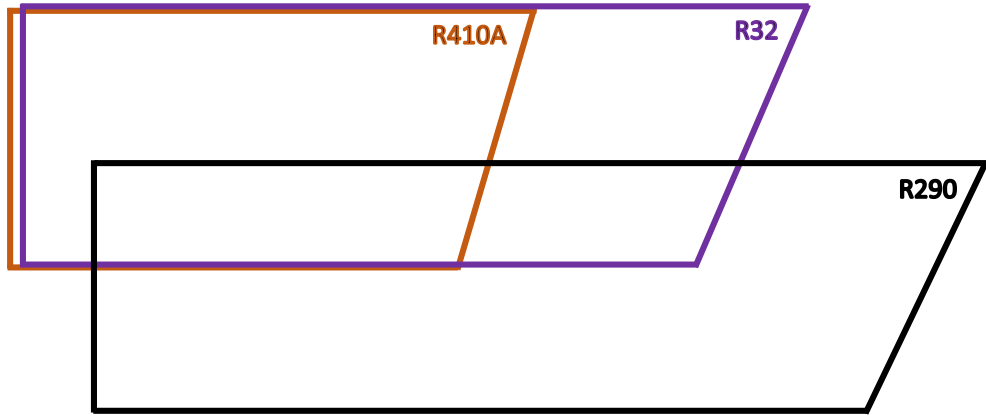
Superheating = 4K

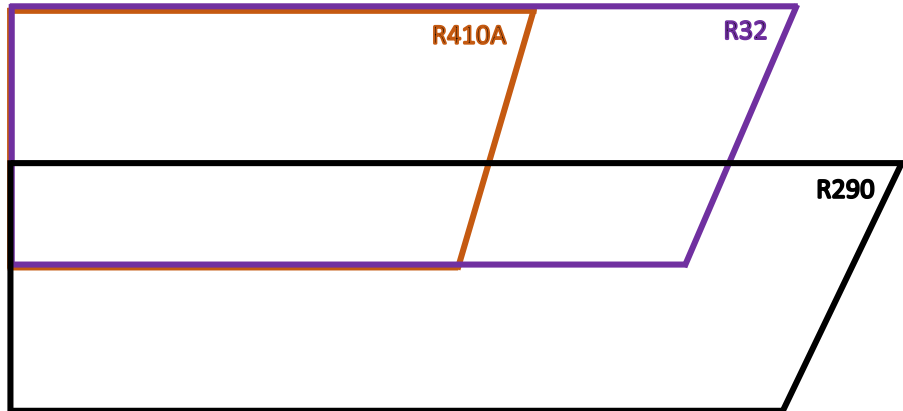
SCT = 40°C

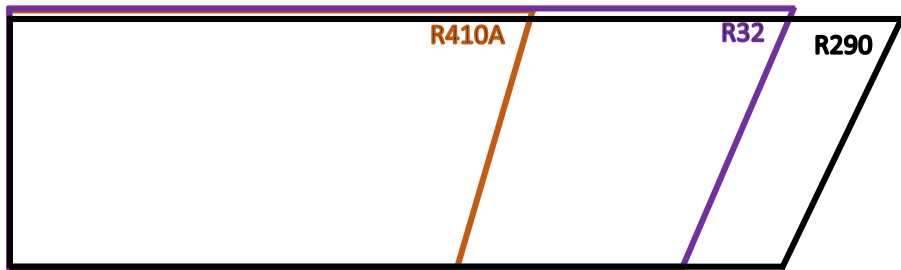
Subcooling = 5K



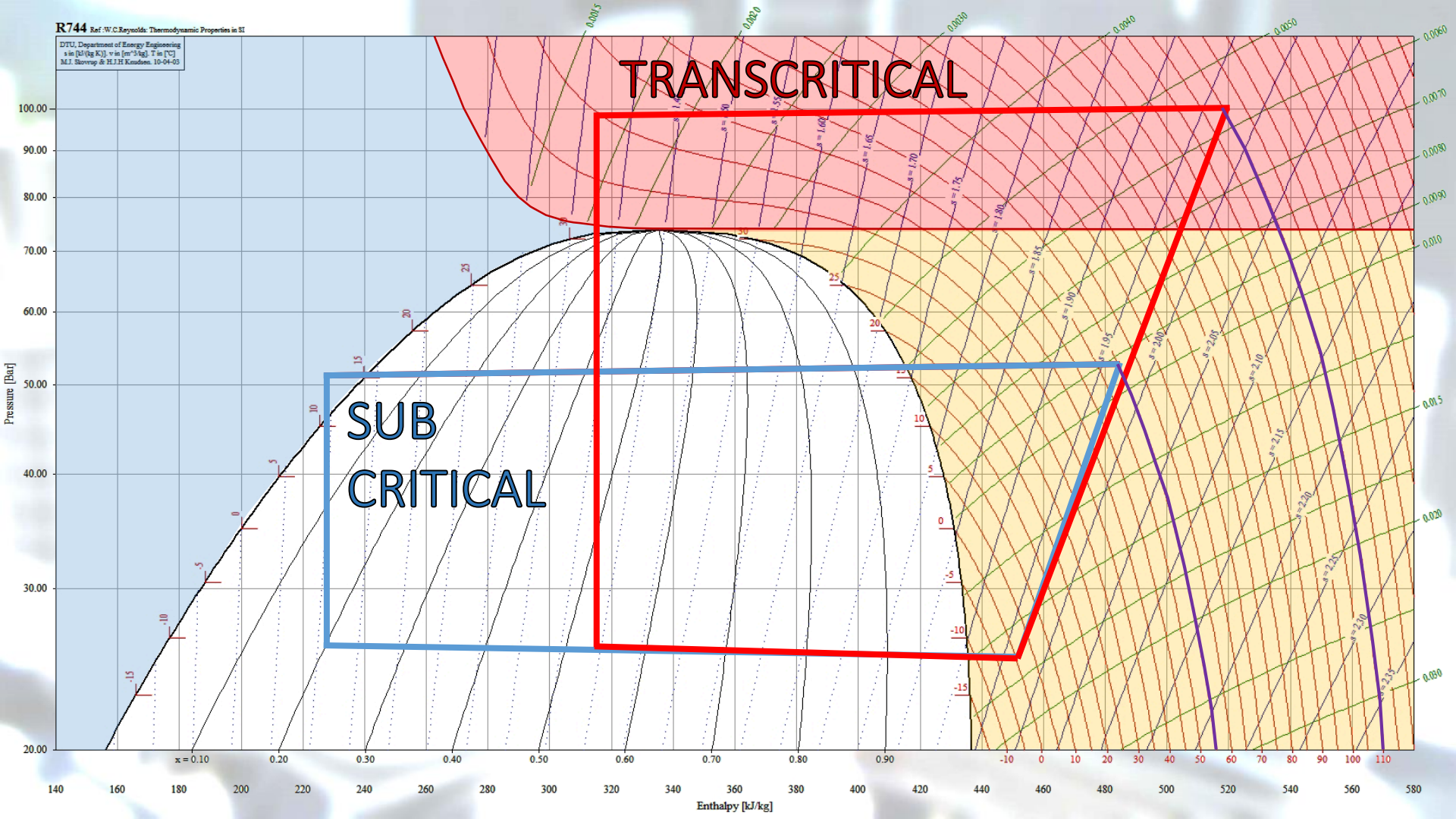
kPa (Abs)

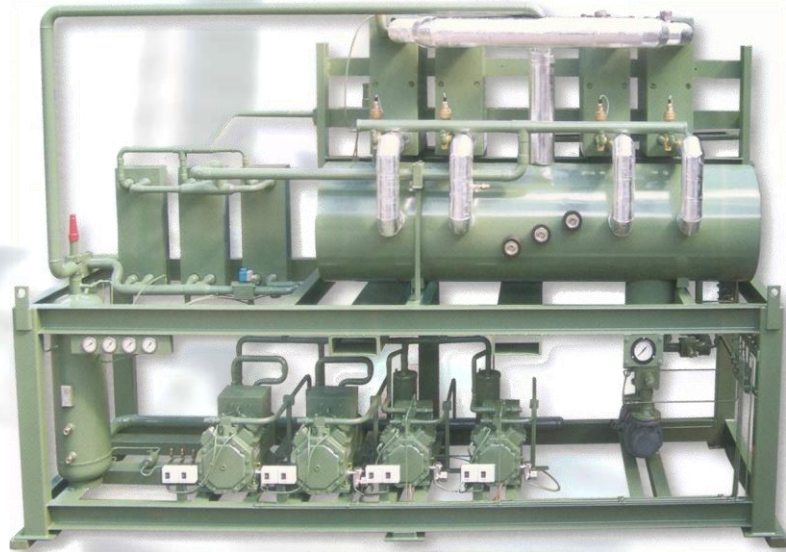
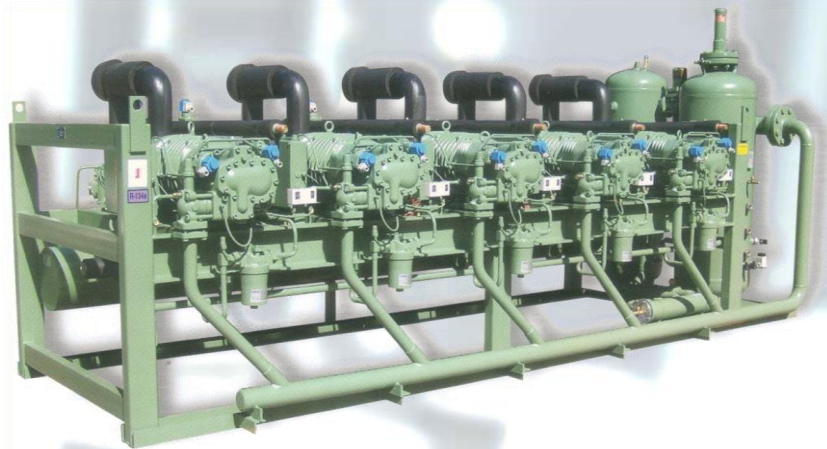


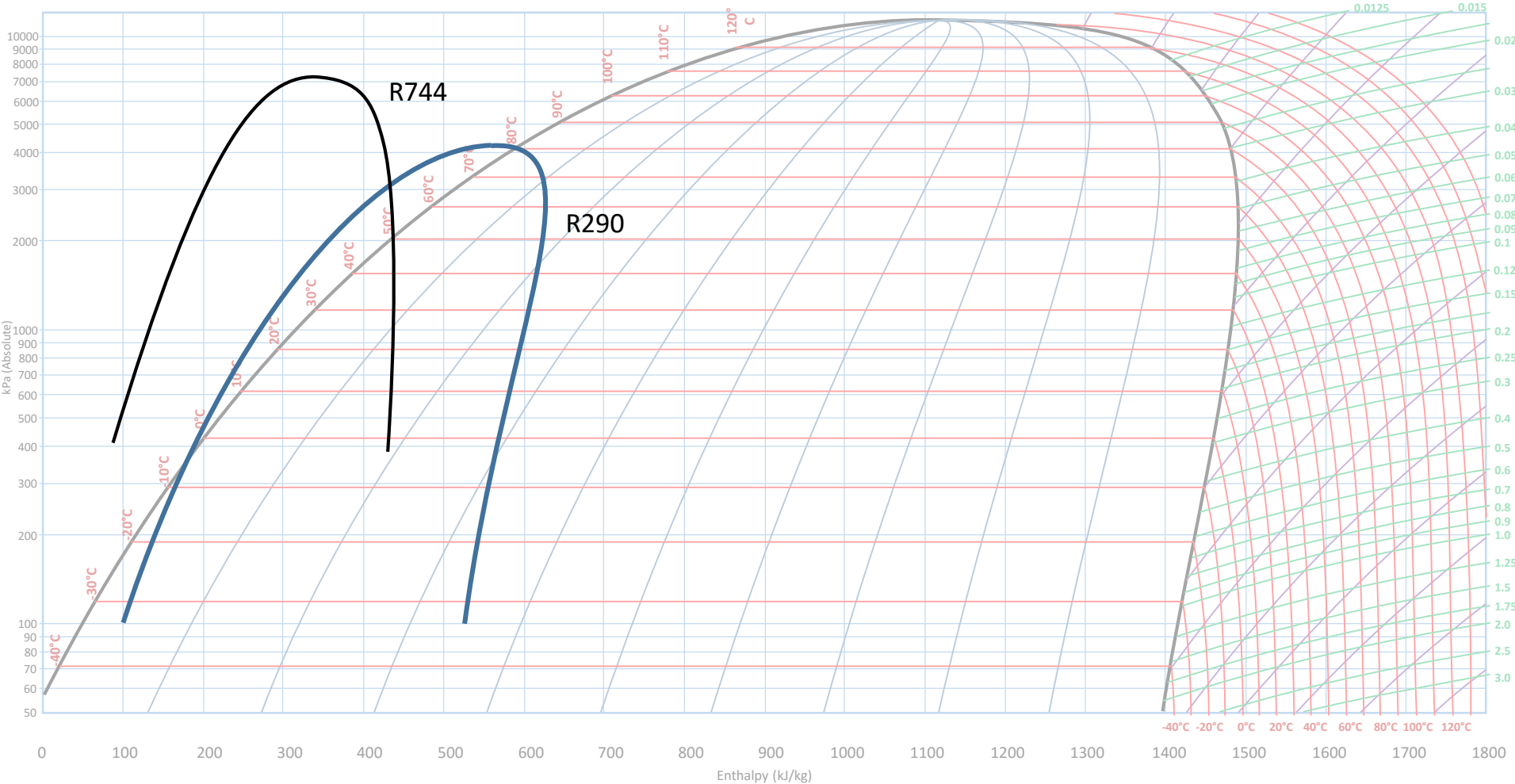




DTU, Department of Energy Engineering
 s in [kJ/(kg K)], v in [m³/kg], T in [°C]
 M.J. Skovrup & H.J.H. Knudsen, 10-04-05















S
rathbrook
laboratory

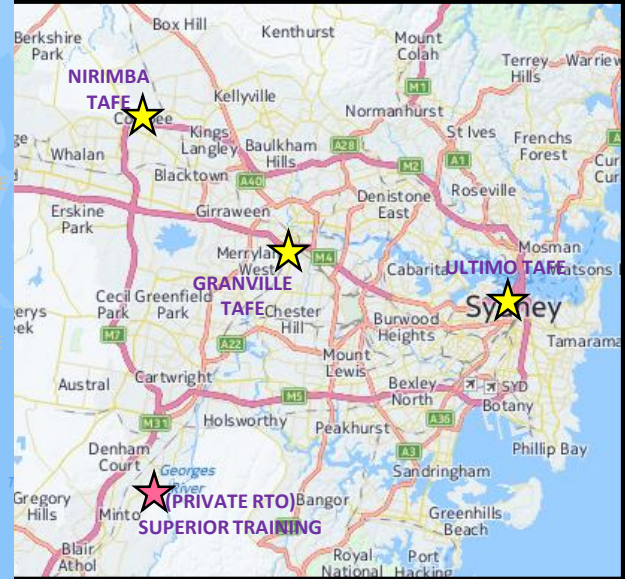
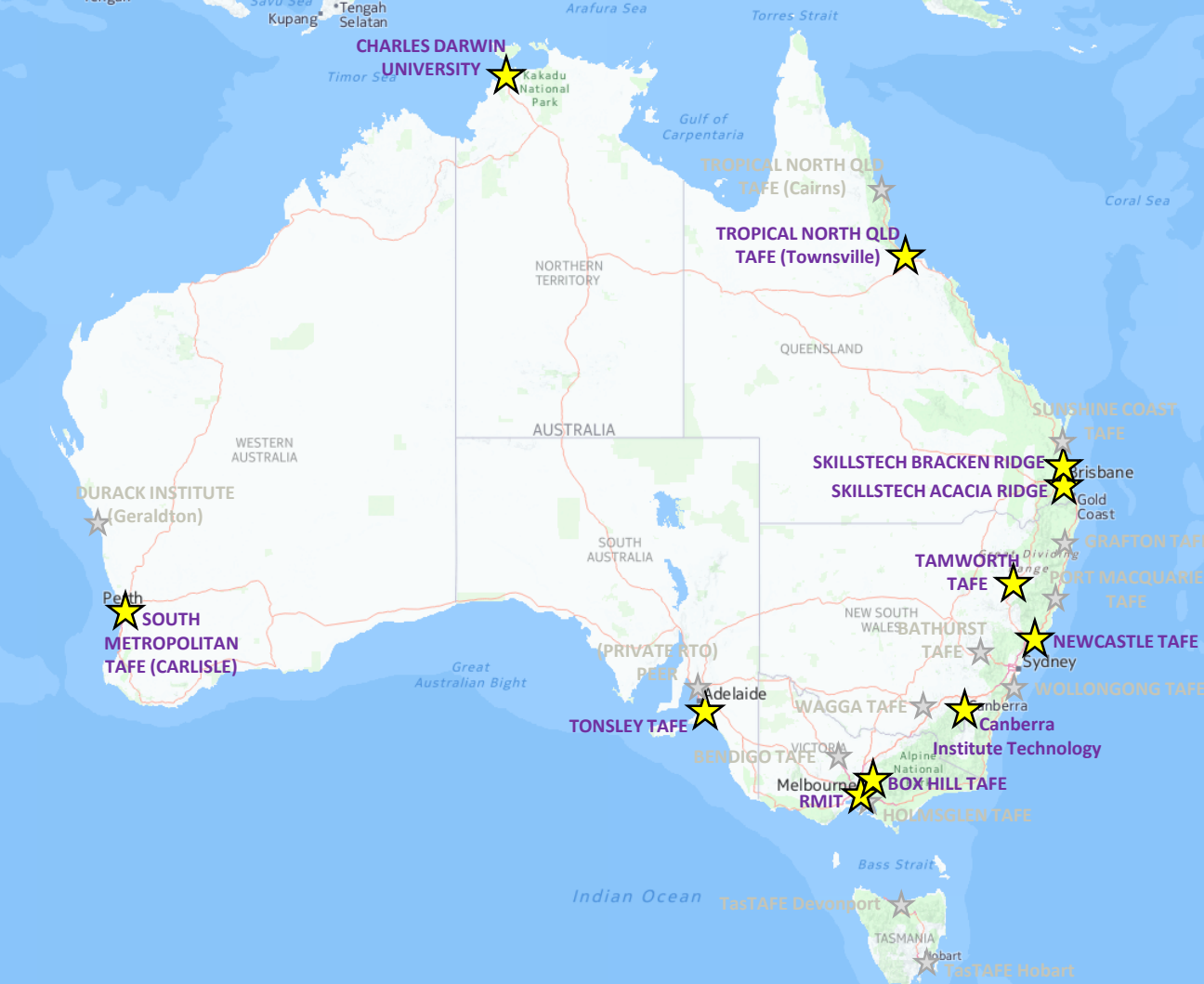




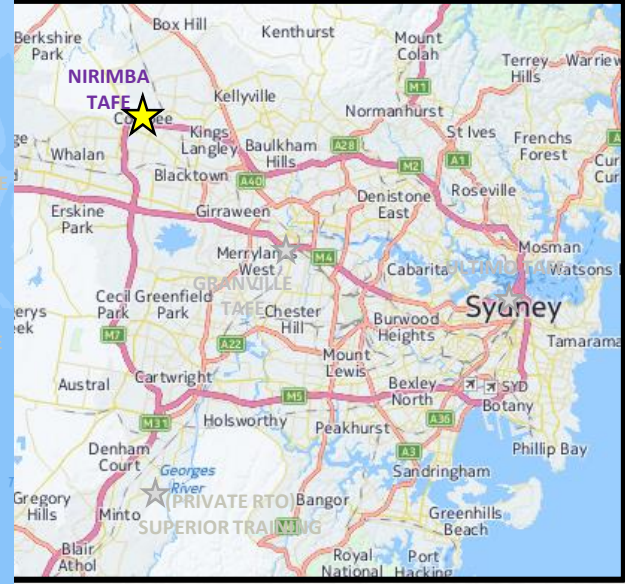
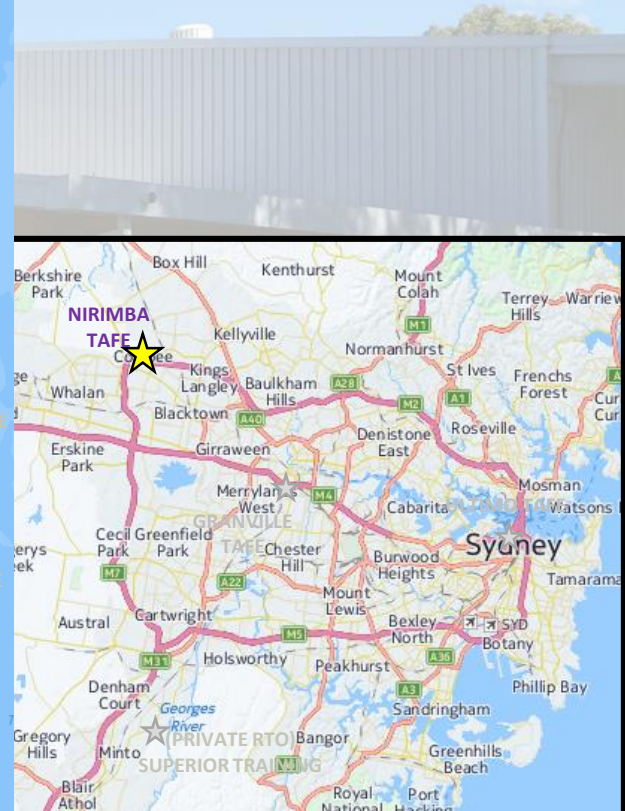
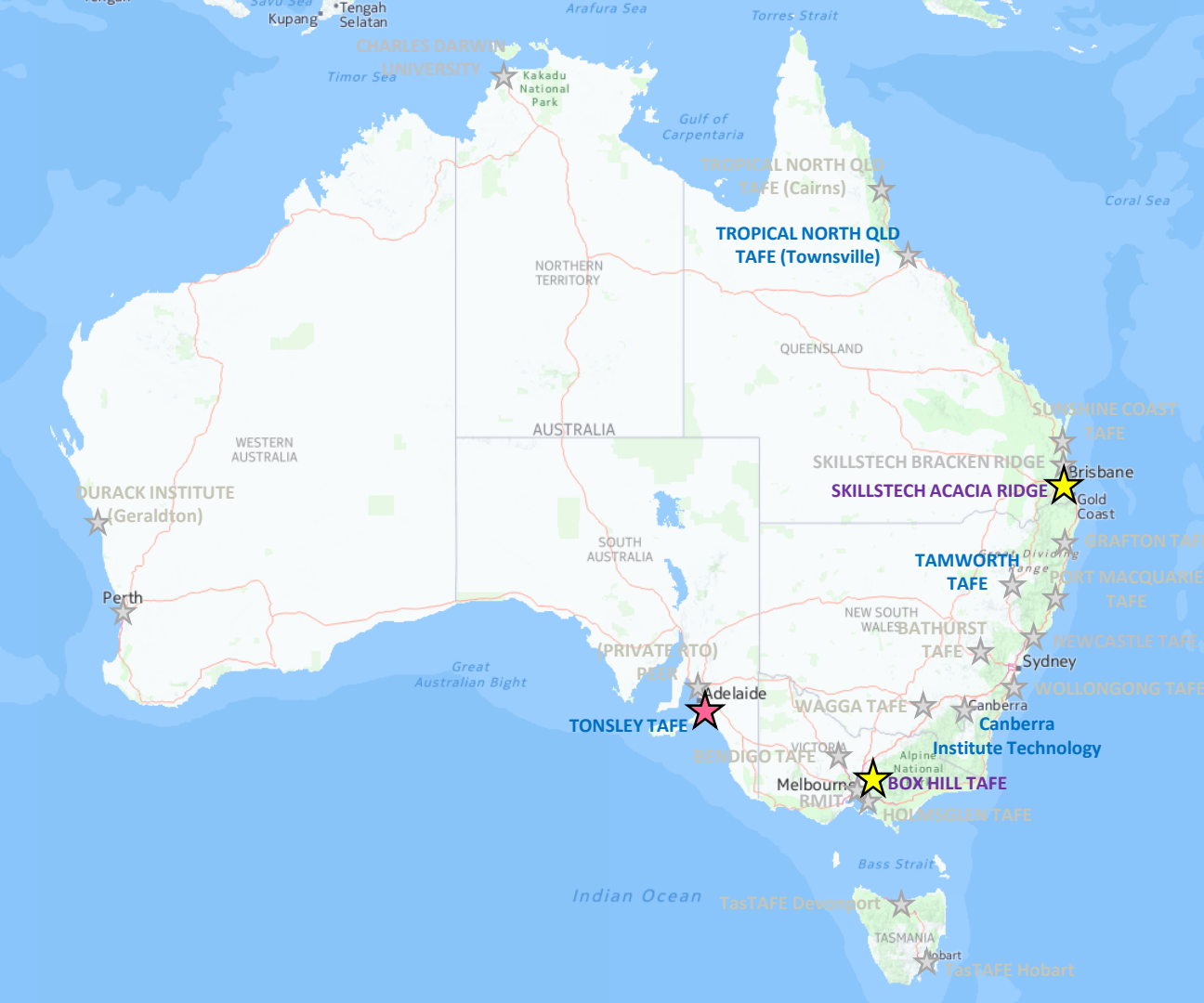
Australian RTO's

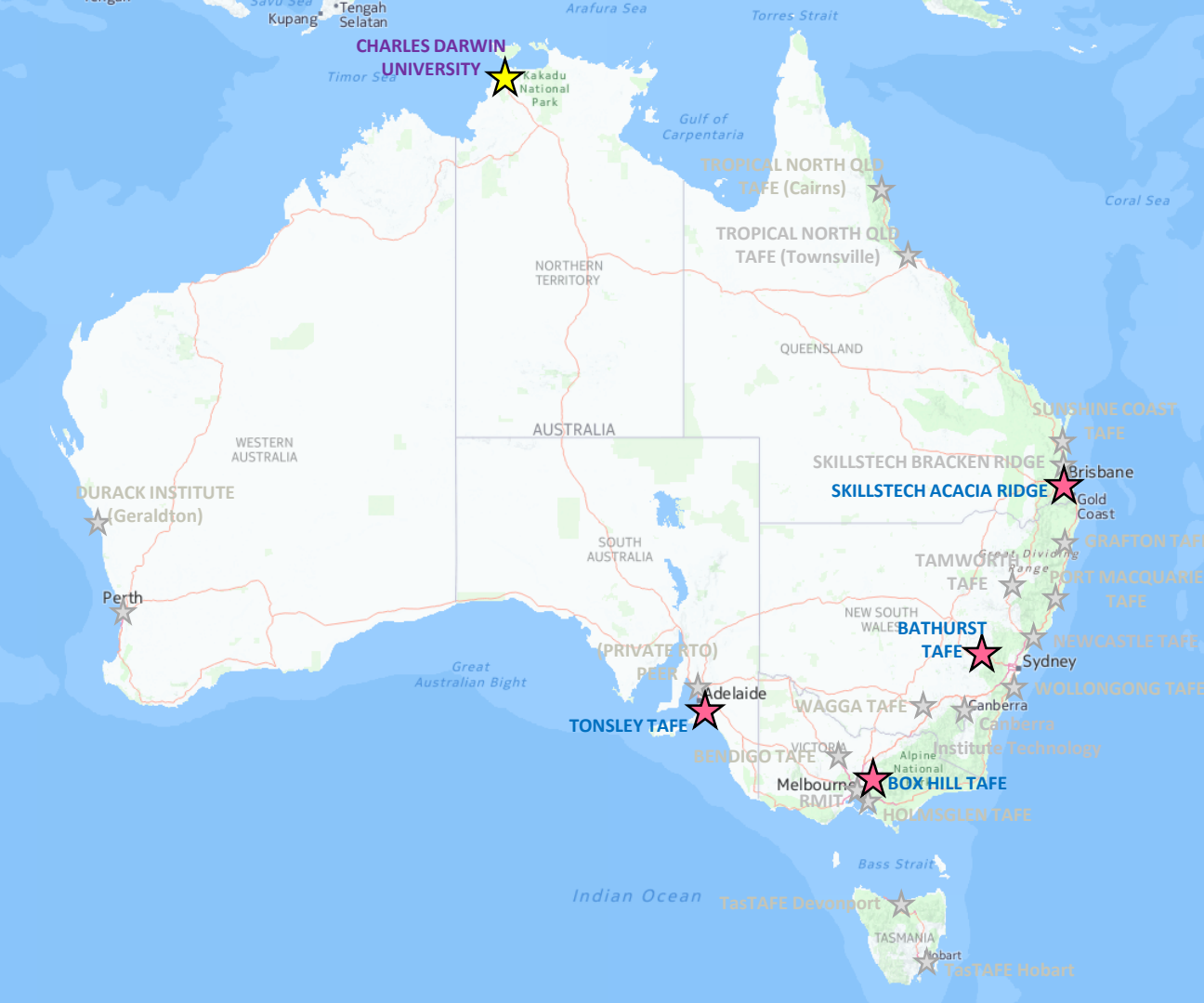


Hydrocarbon Training

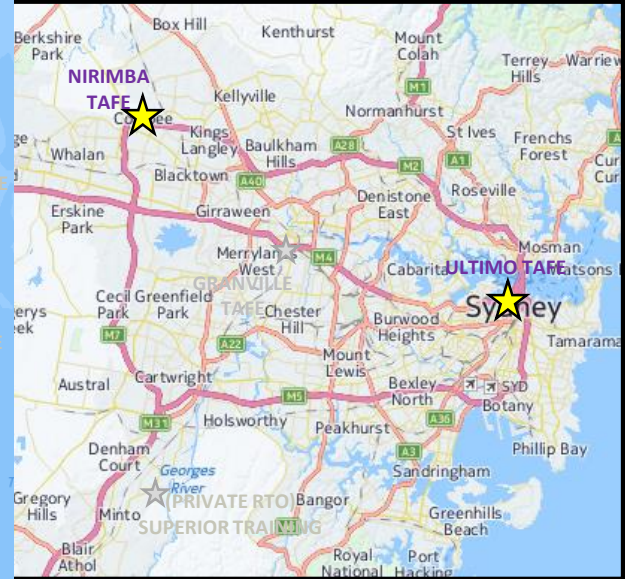


R744 Training





R717 Training



TAFE... Naturally..!!

An Overview of training available in TAFE



Steve Smith

Head Teacher - Refrigeration & Air Conditioning Trades
Nirimba College of TAFENSW
stephen.smith@tafensw.edu.au



TAFE NSW