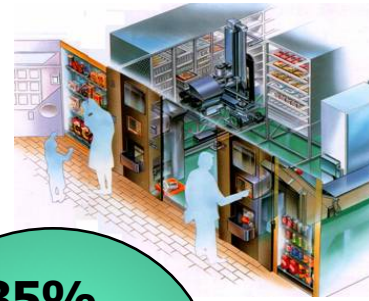




SandenVendo America: CO2 Applications in Food Service Equipment

Light Commercial Panel

Corporate Profile



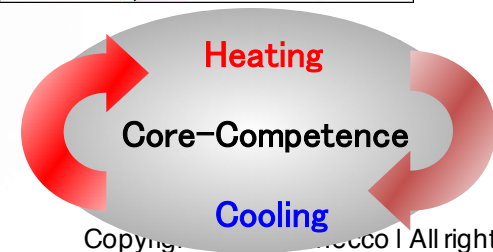
Founded:	July 30, 1943 (70 years)
Capital:	US\$112M
Consolidated Sales:	US\$2.8B
Number of Employees	14,000
Global Locations	54 Business Office & 27 Manufacturing Plants (23 countries)
Main Business Partners:	<p>>Beverage & Food Service Asahi, Coca-Cola, Dr Pepper, ITO EN, KILIN, McDonald's, Meiji, Nestle, Pepsi, 7-Eleven, Sapporo, SNOW BRAND, Suntory, Unilever</p> <p>>Automobile Manufacturer BMW, Daimler, Fiat, Ford, GM, Honda, Nissan, Peugeot Citroen, Renault, Subaru, Suzuki, Volkswagen</p>



60%
 Automotive
 Systems

35%
 Retail Store
 Systems

5%
 Household &
 Environment
 Systems



Vendo
 SANDEN
 10710 Sanden Drive
 Dallas, TX 75238

Company Profile

25



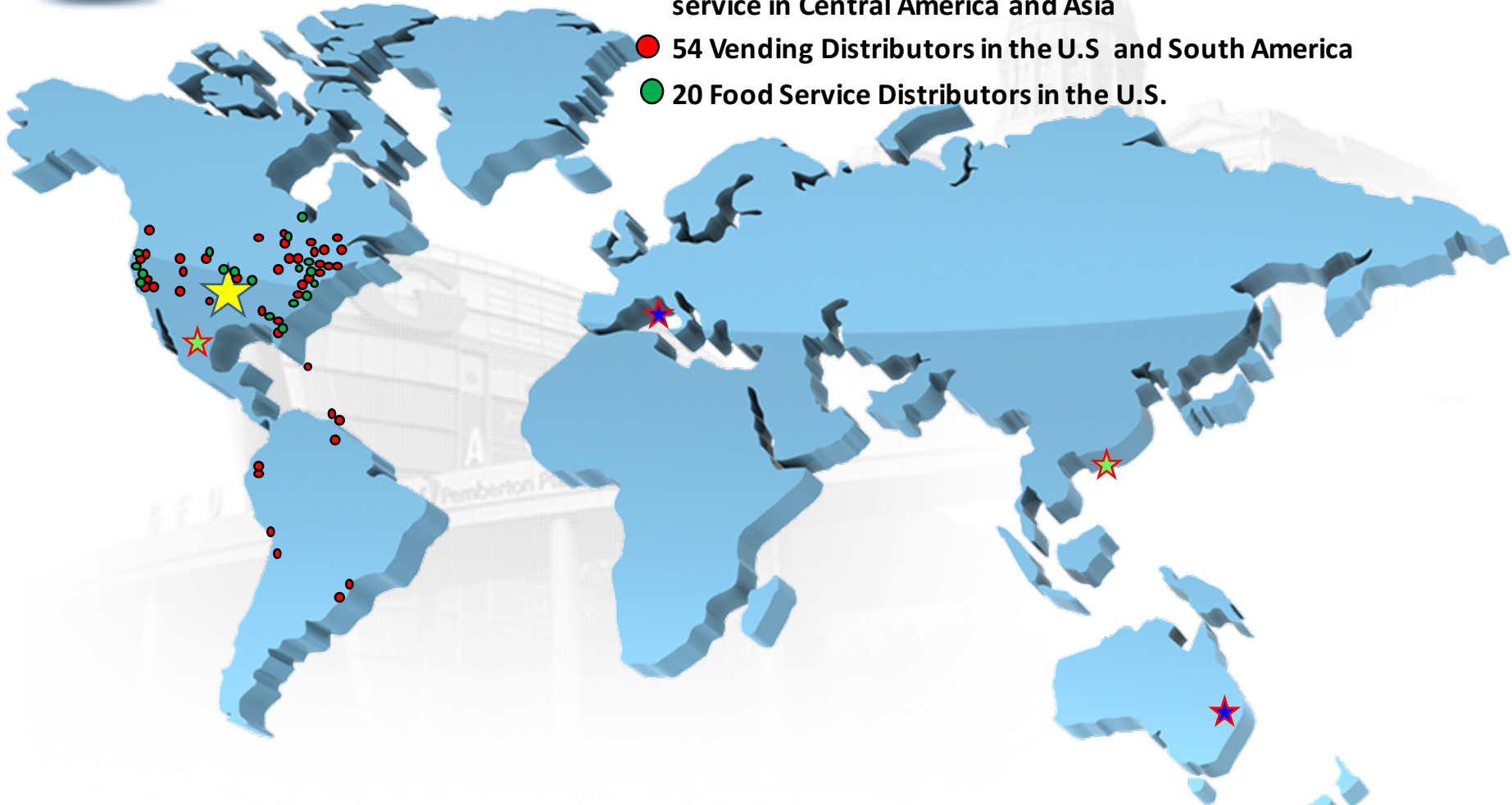
Products	Cold Drink and Snack Vending Machines Refrigerated Showcase, Hot Food Display
Customers	PepsiCo, Coca-Cola, Dr Pepper 7-11, Circle K, Chevron, RaceTrac
Employee	250
Facility	171,000 Sq ft factory 125,000 Sq ft warehouse





Global Network

- ★ Dallas TX based SandenVendo America
- ★ 2 Sanden companies (SVE and SIO) facilitating sales and service throughout Europe, Russia, the Middle East, Australia and the Pacific Rim
- ★ 2 Sanden Partners (Imbera and Freser) facilitating sales and service in Central America and Asia
- 54 Vending Distributors in the U.S and South America
- 20 Food Service Distributors in the U.S.

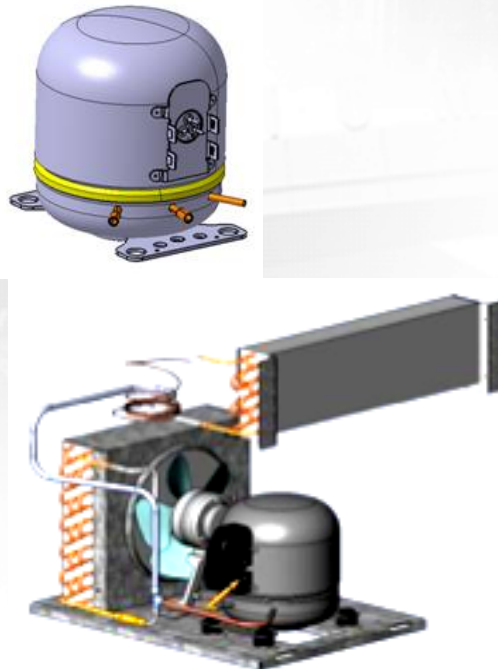


CO2 Compressor Facility

Sanden Shanghai

Thermal Environmental System Co., LTD

Date founded	August 2, 2010
Factory locations	258 Malu zhen feng mao Road, Jiading area, Shanghai, China CP201801
Manufacturing Product	ECO-Friendly New Generation CO2 compressor for Vending Machine, Cooler, Showcase and Heat Pump System

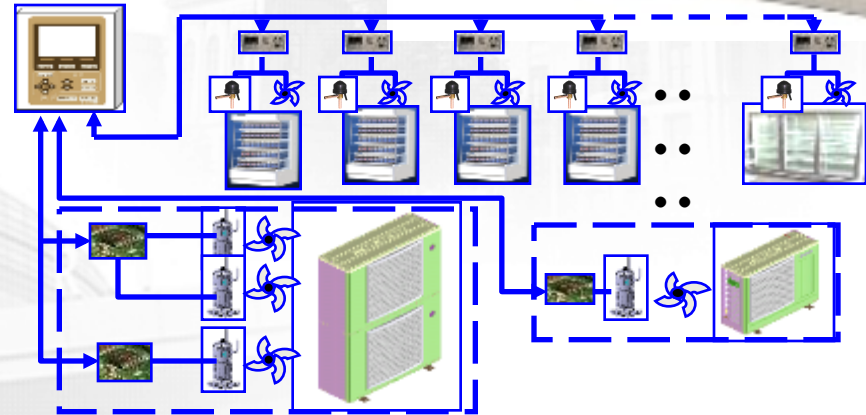
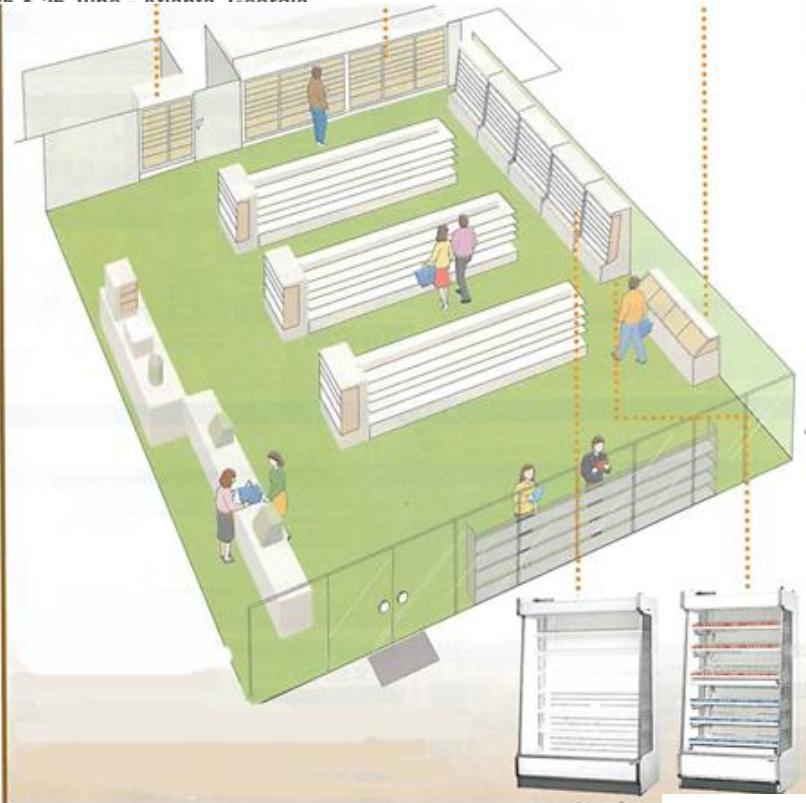


Current Application



To date, we have deployed more than 1200 Vending Machines. In Japan, Co2 Vending Machines have become the standard.

Future Application



3kW

4.5kW

9kW

Perceived Barriers

Price and Power Consumption

ITEMS	CO2 (R744)	R134a	CRITERIA
Energy Star III	4.77 kWh/day	4.33 kWh/day	4.85 kWh/day
2014	6.24 kWh/day	6.86 kWh/day	7.137 kWh/Day
Price Premium	5%	-0-	

Based on Largest Volume Vendor/ model 821



ATMO
sphere
business case
natural refrigerants
25 & 26 June - Atlanta, Georgia

Insert text