

SAVE ON



 **ATMO**
sphere
solutions for asia
natural refrigerants

3-5 February 2015 in Tokyo

Introduction of Natural Refrigerants

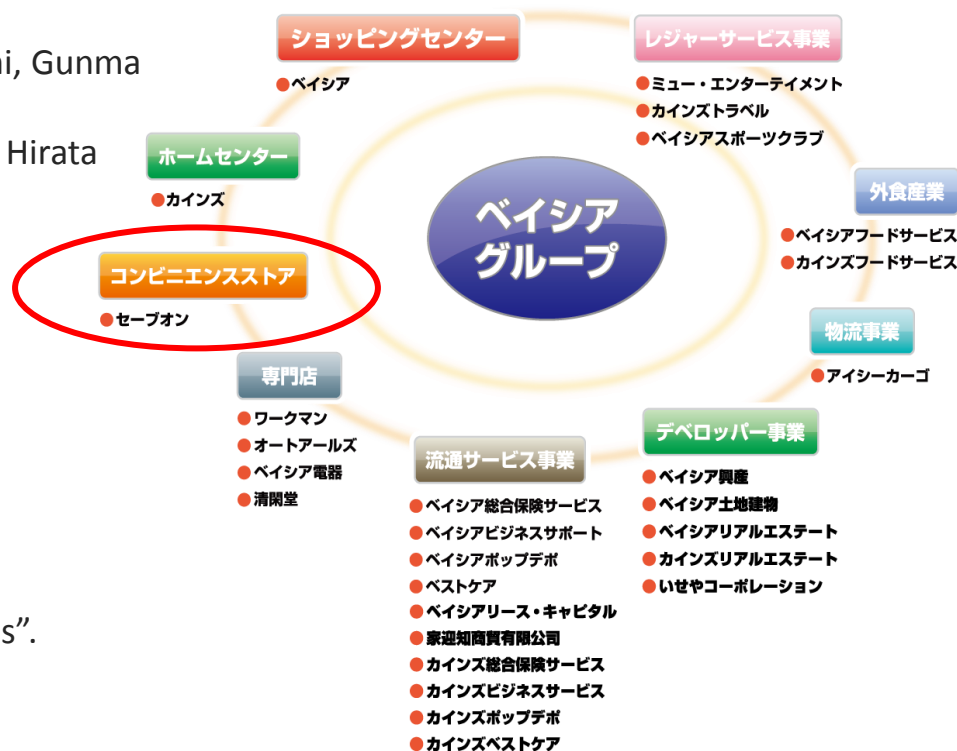
by SAVE ON



Company profile

SAVE ON (Beisia group)

- ◆ Location : 900 Kamesato-machi Maebashi, Gunma
- ◆ Representative : Chairman Mr. Yoshio Tsuchiya
Managing director Mr. Minoru Hirata
- ◆ Founding : March, 1984
- ◆ Store : 605 (December, 2014)
- ◆ Business lineup : Develop convenience store by franchise.

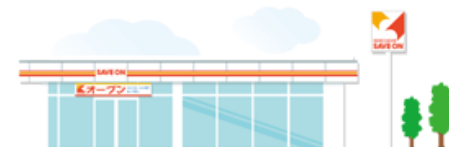


Corporate identity

“For the Customers”

～すべてはお客様のために～

- We devote “Chain store is more discount business”.
- Resolve regional difference and
Contribute to good living standards for citizens.
- Make people and create culture by business.



Approach to environmental activity

● Installation of LED

Finished installation of LED light for all store on July, 2012.
Now installation of LED fascia and LED pole sign are expanding.

● Activity of eco-cap

Collect caps of PET bottle at shop front and donate gain on sale of caps to vaccine donation organization.

● Ecology fund-raise

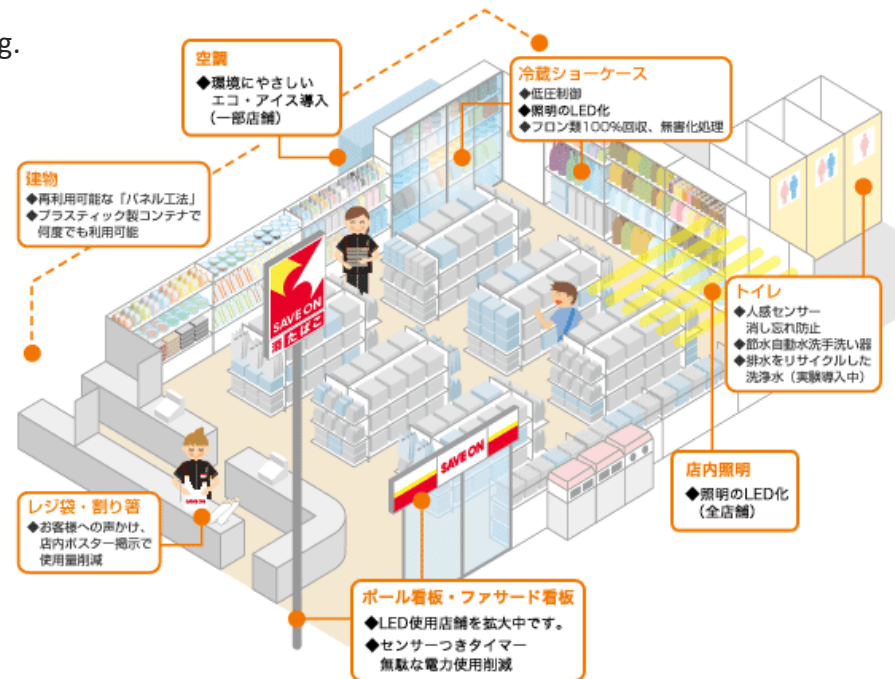
Donate to every prefectural "Use of the Green Fund", and environmental volunteer association to plant trees and make village forest.

● Using eco-friendly car

Using low-emission and hybrid car for distribution vehicle.

● Approach to eco-friendly store

Photovoltaic generation system, thermal barrier coating, air conditioning, building, plastic shopping bag, throwaway chopsticks, bathroom and **Freezing display case**.



| Approach to CFC-Free freezing display case

- Using **R290** flat showcase with glasses since 2014.
(R290・・・Hydrocarbon refrigerant)
(AHT Cooling systems MANNHATTAN) 30 stores
(January, 2015)
- Using **CO2** freezing display case which is going on.
(Panasonic)

Springboard of CFC-Free

- We need to develop “eco-friendly store”.
- Large capacity and electrical power saving make efficient store operation.



Karuizawa-Prince-Shopping plaza store

SAVE ON

Approach to CFC-Free

Compare power consumption between Natural refrigerant showcase and conventional showcase.

Natural refrigerant showcase

(Single-phase 200V)



Store	Maebashi-Rikimaru
Model	MANHATTAN210
Content	572ℓ
Length	2,102mm
Refrigerant/g	R290/120g

Power consumption

In a month

187.79Kw

Electric bill

In a month

3,756 Yen

Conventional showcase

(Three-phase 200V)

NO
IMAGE

Store	Tsuruashima-Ohtagaya
Model	N/A
Content	320ℓ
Length	1,800mm
Refrigerant/g	R404A/1400g

Power consumption

In a month

819.27Kw

Electric bill

In a month

12,699 Yen

Cooling efficiency of R290 is higher than R404A.

Electric bill could reduce about 9,000 Yen when we measured it in a month!!

SAVE ON

Approach to CFC-Free

Approach to ALL natural refrigeration showcase in store

First plan in Japan!!

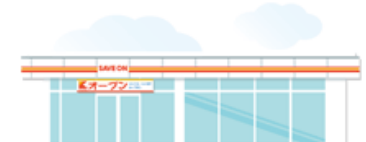
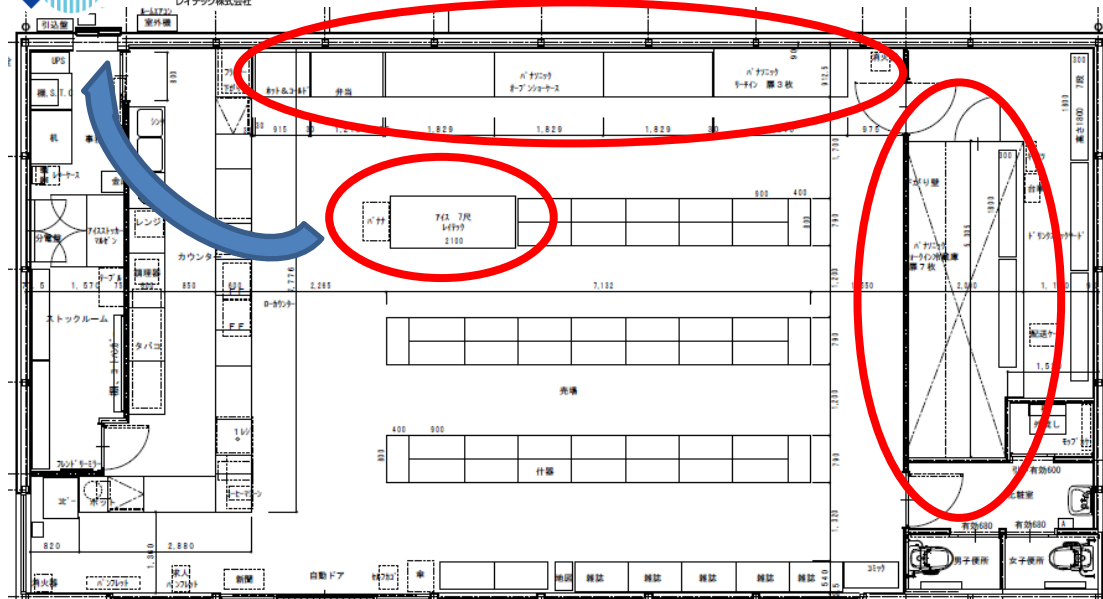
AHT



The first ALL natural refrigeration showcase in store in Japan will open on 20th February.
Wall side : Panasonic CO2 case, open case, reach-in case and walk-in case.
Ice case : AHT Cooling Systems, R290 model.

快適な生活温度を提案する
REI-TECH
レイテック株式会社

Isesaki-koubayashi-minami store



Thank you for listening!

SAVE ON will continue to develop
energy saving store for environmental protection.

